

A new ornamental border font for use
in design and drawing applications such
as Adobe Creative Suite

GOUDY BORDERS™

Table of Contents

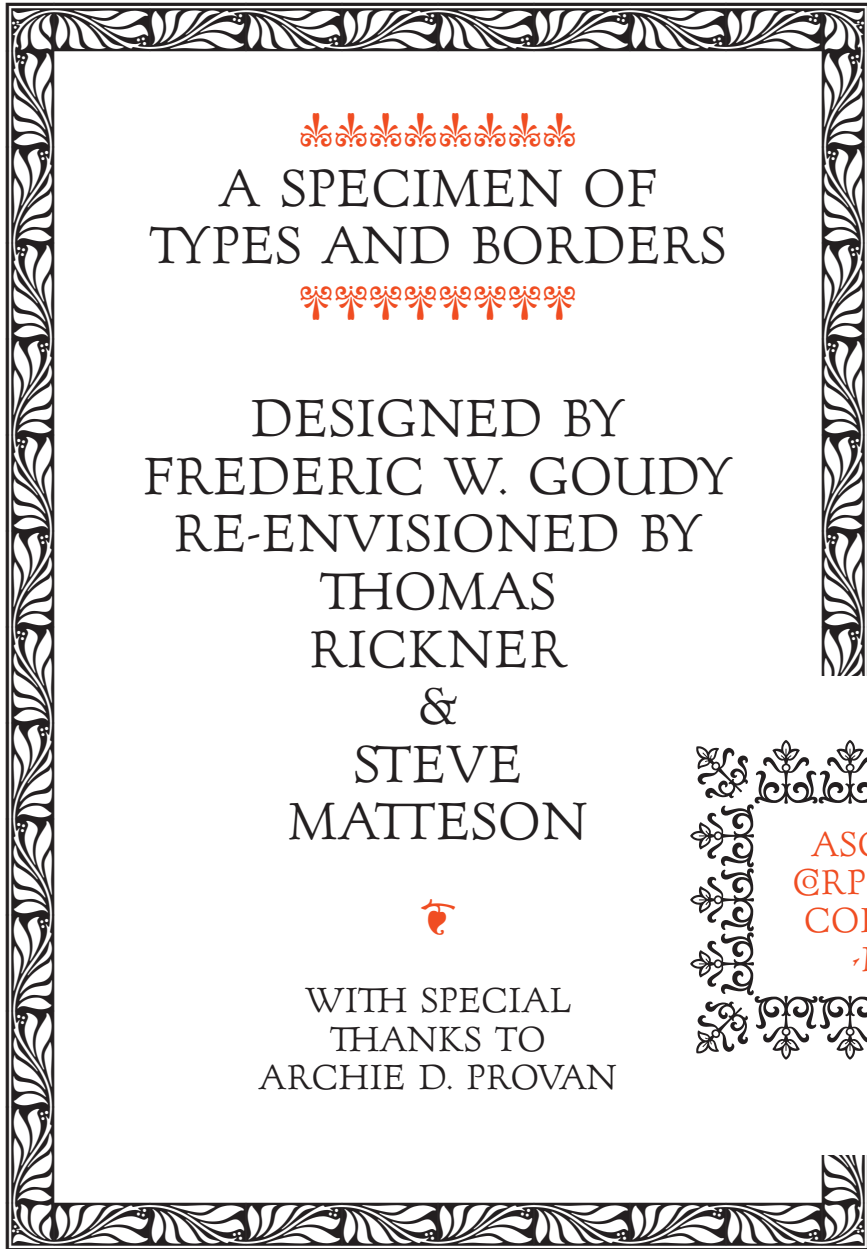
Fonts in Action	3–4
About Goudy Borders Fonts in this Package	5
Using Goudy Borders	6
About the Designer	7



Copyright © 2009 Ascender Corporation. All rights reserved.

Goudy Borders and Ascender are trademarks of Ascender Corporation and may be registered in certain jurisdictions. All other trademarks are property of their respective owners.

<http://www.ascendercorp.com>



A SPECIMEN OF
TYPES AND BORDERS



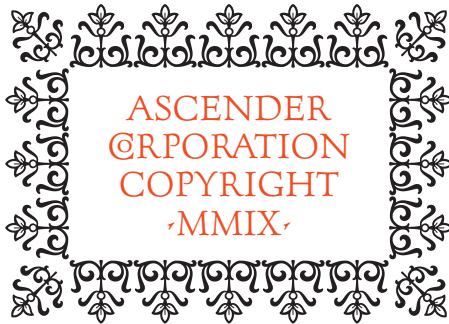
DESIGNED BY
FREDERIC W. GOUDY
RE-ENVISIONED BY
THOMAS
RICKNER

&

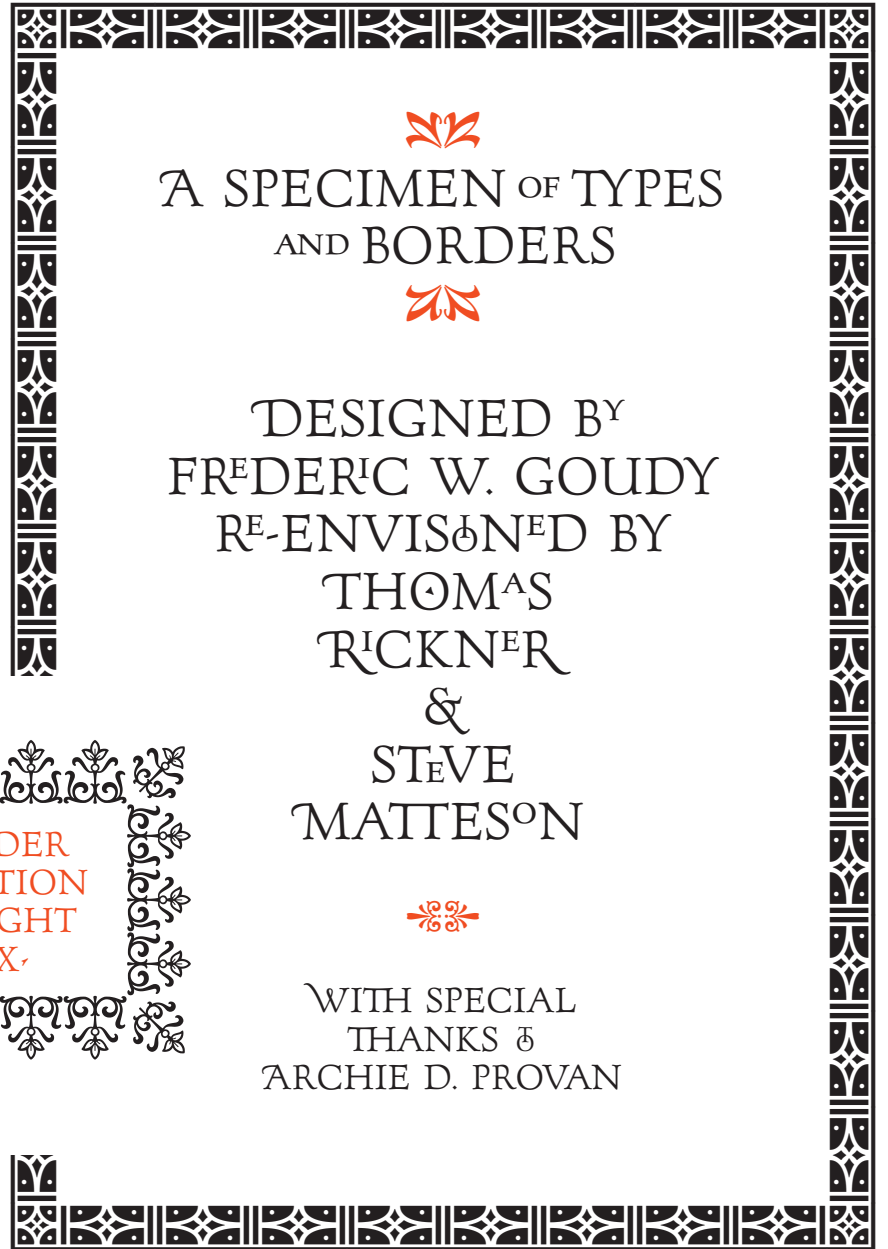
STEVE
MATTESON



WITH SPECIAL
THANKS TO
ARCHIE D. PROVAN



ASCENDER
CORPORATION
COPYRIGHT
·MMIX·



A SPECIMEN OF TYPES
AND BORDERS



DESIGNED BY
FR^EDERIC W. GOUDY
RE-ENVIS^ON^ED BY
THOM^AS
RICKN^ER

&

ST^EVE
MATTES^ON



WITH SPECIAL
THANKS ^O
ARCHIE D. PROVAN

Goudy Borders font shown
with Goudy Forum™ Pro.



Goudy Borders font shown
with Monotype Grottesque™ Bold Extended
(above); Pericles Pro™ (top right);
Pescadero™ Pro (bottom right).



About Goudy Borders

Goudy Borders brings three of Frederic W. Goudy's border designs to the computer. Designed in the 1920's each design consisted of individual pieces of metal type arranged to create ornamental patterns. These patterns are versatile design elements which can be used in title pages, posters, invitations, logos, packaging and signage.

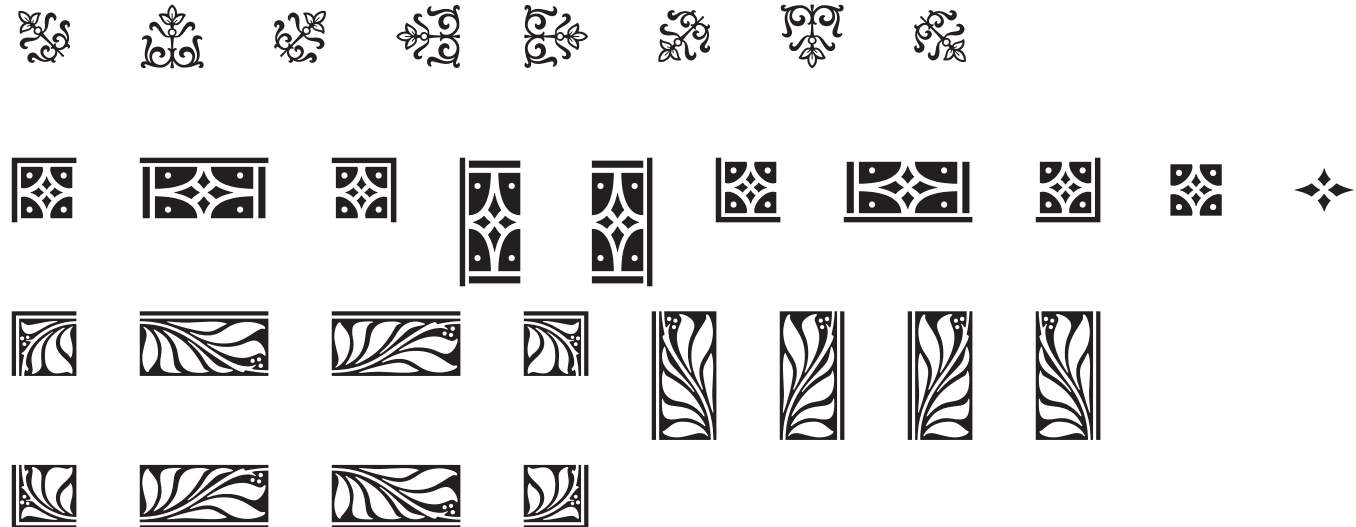
In the Goudy Borders font these pieces have been mapped to individual letters on the computer keyboard. For example:

a =  A =  1 = 

Typing these pieces in the right sequence will build borders which connect in Adobe Creative Suite applications. Microsoft Office applications will not connect vertically but will connect horizontally. Variations to the standard sequence allow creative patterns and unique design possibilities.

Fonts In This Package

Regular



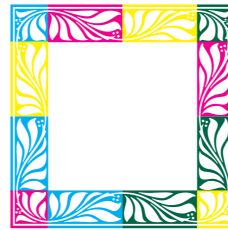
Using Goudy Borders

The easiest way to get started using Goudy Borders is to simply duplicate the letter sequence illustrated below in an Adobe Creative Suite application. In order for the elements to connect vertically the point size and leading values need to be equivalent (for example 18pt/18pt leading).

Another way to create borders is to use the glyph palette in Adobe Illustrator or InDesign to add elements to a page.

NOTE: There is some tricky behavior to the way these elements connect – so be careful how you arrange the pieces. Once a pattern is final it can be locked and/or sent to the back layer so words and text can be overlaid.

a b c d
e . . . f Enter
Enter
g . . . h Enter
Enter
i j k l



A B B C
D . . . E Enter
Enter
D . . . E Enter
Enter
F G G H



1 2 2 3
4 . . . 5
4 . . . 5
6 7 7 8



About the Designer

FREDERIC W. GOUDY designed these ornaments prior to their showing in a 1927 type specimen. He was called 'a giant among type designers' who brought a very American sensibility to his craft. His contributions to modern typesetting and desktop publishing live on in such favorites as Goudy Old Style, Goudy Sans and Californian.

STEVE MATTESON reproduced these borders for use in computer applications. Steve is the Director of Type Design for Ascender Corporation. With over 20 years producing typefaces for corporate clients and consumer devices he craves the touch of metal type pressed into paper.

Rediscovering and studying the masters is a pleasure not often enjoyed in the daily endeavor to produce technically advanced typography. But their indelible impression is left on the Ascender team as they continue to develop new typefaces to meet the very modern demands of their clients.